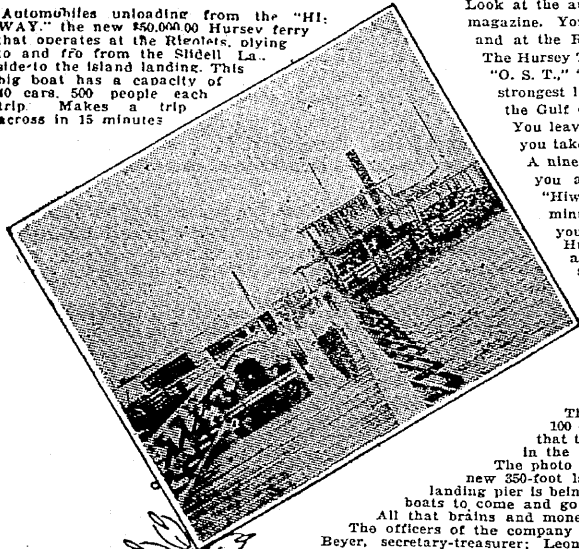


MISSISSIPPI GULF COAST

Playground of the Nation

Automobiles unloading from the "HIWAY," the new \$50,000.00 Hursey ferry that operates at the Rigolets, plying to and fro from the Slidell La. side to the island landing. This big boat has a capacity of 60 cars, 500 people each trip. Makes a trip across in 15 minutes.



Look at the auto map of the Mississippi Gulf Coast on page two of this magazine. You will see where Hursey ferries are designated at the Chef and at the Rigolets.

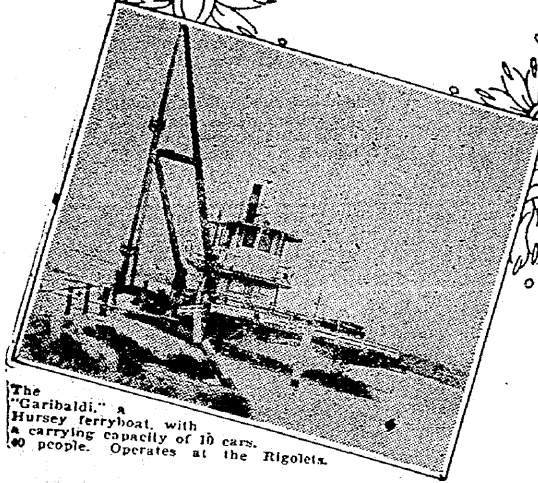
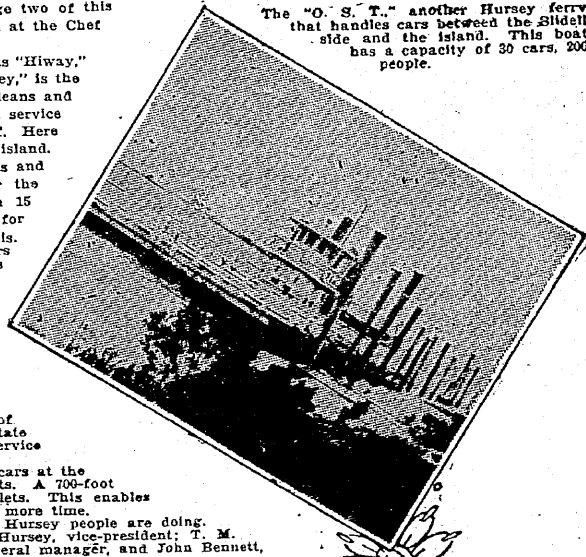
The Hursey Transportation Co., Inc., operating the ferryboats "Hiway," "O. S. T.," "Leta," "Garibaldi," and the ferry barge "Hursey," is the strongest link in the auto traffic chain between New Orleans and the Gulf Coast. Strongest because of its most efficient service. You leave New Orleans and travel 23 miles to the Chef. Here you take the "Hursey" and in five minutes are on the island. A nine and a half-mile drive on smooth gravel roads and you again take a Hursey ferry; this time either the "Hiway," "Leta," "Garibaldi" or "O. S. T." In 15 minutes you are on the Slidell side and ready for your 47-mile ride over gravel road to Bay St. Louis. Hursey service transported as high as 1500 cars a day at the peak of traffic last summer. This summer, with the addition of the "Hiway" (60-car capacity) they can handle as high as 2500 cars a day.

There is no waiting, no delay of any kind. We pulled up to the Chef landing, ran our car on the "Hursey" and in 5 minutes were on the island. It was the same way at the other end of the island. On board the "Hiway" in 15 minutes' time we were on the Slidell side. No fuss, no muss, no bother!

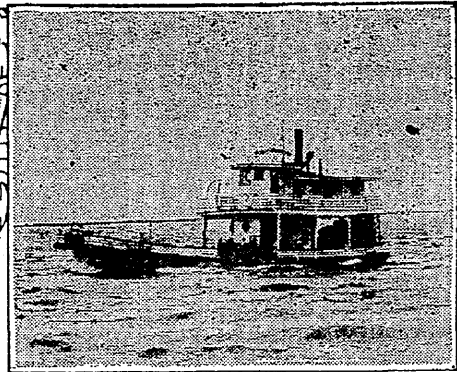
The five boats can handle in the neighborhood of 100 cars a trip. It is not praise, merely facts, to state that the Hursey service is the most efficient ferry service in the South.

The photo on this page shows the "Hiway" discharging cars at the new 350-foot landing pier on the Slidell side of the Rigolets. A 700-foot landing pier is being constructed on the island side at the Rigolets. This enables boats to come and go without having to turn around, thus saving more time. All that brains and money can do to give service and save time the Hursey people are doing. The officers of the company are: Abner Hursey, president; Mrs. Abner Hursey, vice-president; T. M. Beyer, secretary-treasurer; Leonard Hursey, chief clerk; E. B. Oulliber, general manager, and John Bennett, master mechanic.

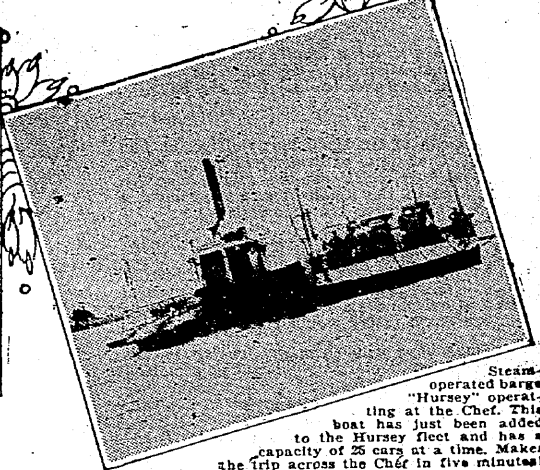
The "O. S. T." another Hursey ferry that handles cars between the Slidell side and the island. This boat has a capacity of 30 cars, 200 people.



The "Garibaldi," a Hursey ferryboat, with a carrying capacity of 10 cars, 40 people. Operates at the Rigolets.

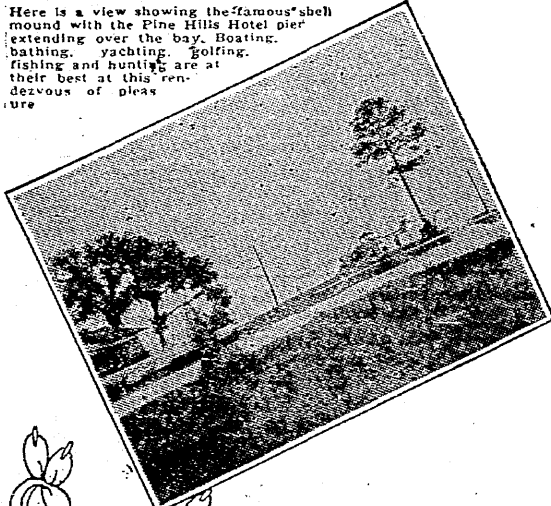


The "Leta," fastest boat of its kind in Southern waters. This Hursey ferryboat has a carrying capacity of 12 cars, 50 people. This boat handles traffic at the Rigolets.



Steam-operated barge "Hursey" operating at the Chef. This boat has just been added to the Hursey fleet and has a capacity of 25 cars at a time. Makes the trip across the Chef in five minutes.

Here is a view showing the famous shell mound with the Pine Hills Hotel extending over the bay. Boating, bathing, yachting, golfing, fishing and hunting are at their best at this rendezvous of pleasure.



Pine Hills Hotel at Pine Hills On-the-Bay at Pass Christian is the Mississippi Gulf Coast's finest and most beautifully appointed hotel. No other hotel can approach it in either its architectural beauty or its natural setting of scenic charm. Mere words fail to convey the luxuriant richness of this magnificent hotel. Many have termed it the "Queen of the Coast."

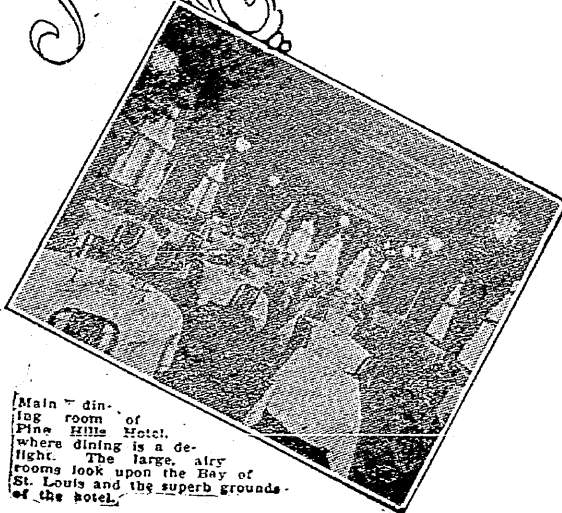
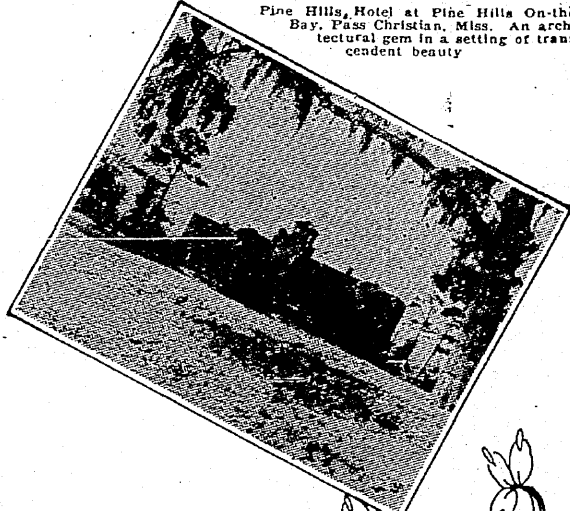
Overnight from almost everywhere. Convenient to every city, every town and all activities of the coast, this palatial hotel with its sportiest of golf links, its pleasant surroundings of Southern pine trees, moss covered oaks and magnolia, offers to the public the finest expression in resort hotels outside of the Riviera.

The hotel faces the glorious Bay St. Louis and another side overlooks the wooded hillsides of Pine Hills On-the-Bay. Restful comfort amid enchanting surroundings lure the guest to forgetfulness of the world and its cares. Golf on the sporty 18-hole course calls to the heart of every golfer, and nature with its beauty, the shimmering bay with its smiling invitation to swim or fish or go a-boating, all of Pine Hills offers more than you ever expected of even the Gulf Coast.

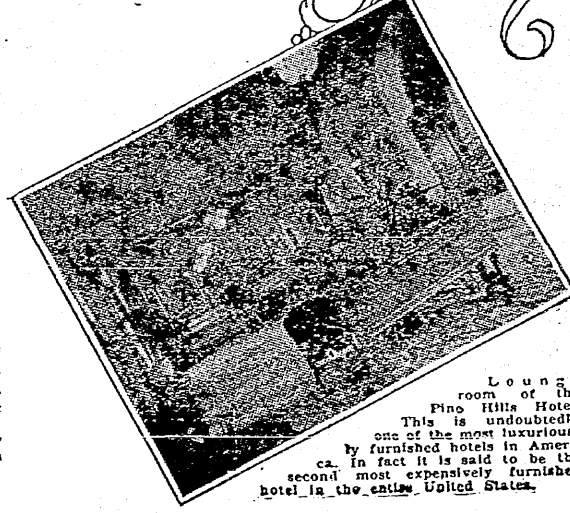
Motor to New Orleans in a few hours over gravel roads; or, if you wish, board a fast L. & N. train and be there in an hour and a half.

Taste the Creole dishes of Pine Hills, enjoy the delicious Southern cooking; hike through the pine-scented hills, or motor over roads of glasslike smoothness—in other words, come on over to Pine Hills and learn what REAL living really means!

Pine Hills Hotel at Pine Hills On-the-Bay, Pass Christian, Miss. An architectural gem in a setting of transcendent beauty.



Main dining room of Pine Hills Hotel, where dining is a delight. The large, airy rooms look upon the Bay of St. Louis and the superb grounds of the hotel.



Lounge room of the Pine Hills Hotel. This is undoubtedly one of the most luxurious furnished hotels in America. In fact it is said to be the second most expensively furnished hotel in the entire United States.

